

Death Disco

MENU
PRESS PLAY

STEREO

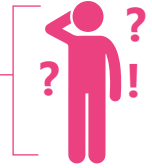


HOW TO DISCO

ARE YOU LEFT CONFUSED WHEN THE BEAT DROPS?

Look no further, social-enthusiast! With our handy DISCO GUIDE, you too will be able to dance up a disco inferno on a Saturday night. Please note: any burn injuries as a result of Inferno's caused is not the responsibility of this guide.

You, before this guide (at a disco loss)



1. IDENTIFY A FITTING LOCALE

Look for key signs of a disco in your area.



Dancing
Groovy Beats
DJ's
Raised roofs
Audible Tunes

2.

KNOW THE DISCO BALL

Round
Sparkly
Alluring



Identify the key disco component. Place yourself within close proximity.

3.

ASSEMBLE PALS



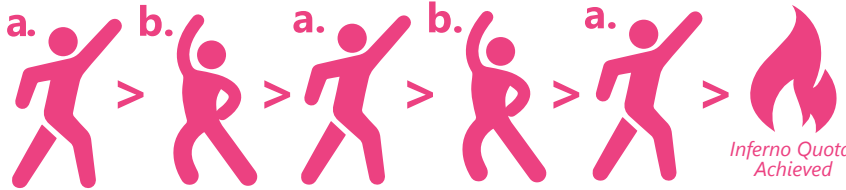
Utilise personal device

GET DOWN

Repeats figs (a.) into (b.)

For bonus disco points, alter designated poses in time with audio beat.

4.



Inferno Quota Achieved

DISCO TILL THE BREAK OF DAWN

6.



Temporal advancement

Party all night with your newfound disco skills.

5.



Iconic Beverages

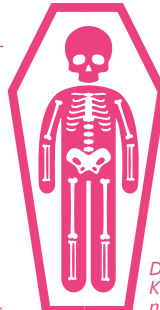
STAY HYDRATED

Quench that thirst with an ice cold beverage. Order a slushie for maximum chill

7.

LET NOTHING STOP YOU

Fallen disco enjoyer



They rise again in an unholy display, to boogie once more.

DISCO IS ETERNAL
Keep the groove going, no matter the obstacle.



Contents

4-6 SIGNATURE COCKTAILS

7 SLUSHIES

7 SIMPLE SERVES

8 SHOOTERS

9 MARGS

10 BEERS & WINE

@DEATHDISCOBRISTOL



LET'S

GO

DISCO

SIGNATURE COCKTAILS

TOP TEN TRACKS



COCO CARAJILLO

Cazcabel Coconut Tequila

Cacao, cold brew coffee

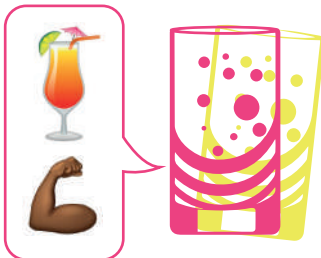


Pink Chihuahua

Cazcabel Blanco Tequila

pink dragonfruit, mango

pineapple, soda



Mr Motivator

Mount Gay Eclipse Rum

passionfruit, vanilla, lime

passionfruit soda



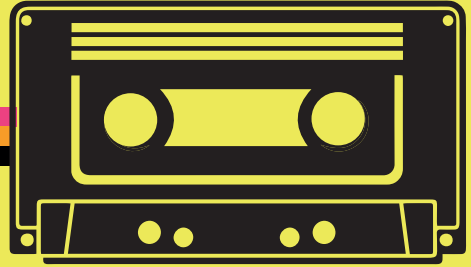
YAS QUEEN!

Tried & True Vodka, Nectarine

guava, lime, Hooch Lemon

ALL DRINKS £12

2-FOR-£16 TILL 8PM



MEZCAL NEGRONI

La Travesia Mezcal, Campari

Aperitivo Co! Turin



Hemingway Spritz

Mount Gay Eclipse Rum

Aperol, maraschino, lime
pink grapefruit, prosecco



Spicy Marg

Cazcabel Blanco Tequila

Haban-cello, lime, Tajin



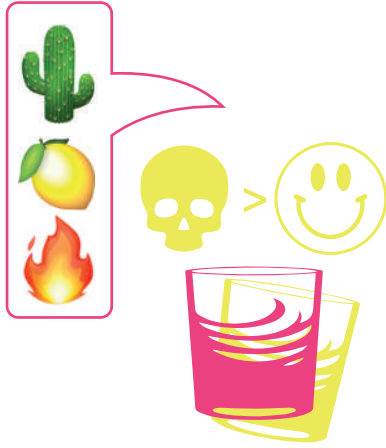
SUM FRUITY ONE

Widges Gin, Aperol

blood orange, orange, lime

ALL SIGNATURE DRINKS £12

2-FOR-£15 TILL 8PM



Cure-All

Cazcabel Blanco Tequila

La Travesia Mezcal, lemon

agave, ginger



Oaxaca Old Fash

La Travesia Mezcal

Cazcabel Reposado Tequila

agave, chocolate bitters



SLUSHIES

ALL £10

2-4-£16 TILL 8PM



MARGARITA



MARGARITA

PASSIONFRUIT



PINA COLADA



MARGARITA

WATERMELON

CHERRY

SIMPLE SERVES ALL £10

Paloma

Tequila, grapefruit soda, lime

Moo Woo

Mezcal, cranberry, lime

Batida

Tequila, full fat coke, lime

T&T

Tequila, tonic, lime



2-4-£15 TILL 8PM

SHOOTERS



ALL £5



M&M

Mezcal & Amaro Montenegro



VERDITA

Cazcabel Blanco & side shot of verdita

HABAN-CHELLO

Spicy!

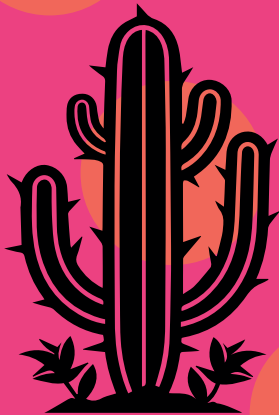
ROOSTER ROJO PINEAPPLE TEQUILA

You can dance

CAZCABEL COCONUT

CAZCABEL HONEY

CAZCABEL COFFEE



MARGARITAS

MARGARITAS

MARGARITAS

TEQUILA

CAZCABEL BLANCO
TAPATIO BLANCO
OCHO
HERRADURA PLATA
PATRON SILVER
FORTALEZA BLANCO

25ML SHOT

MARGARITA

£5	£12
£6	£13
£6	£13
£6	£13
£7.5	£16
£8	£17

MEZCAL

LA TRAVESIA
VERDE
DEL MAGUEY VIDA
MONTELOBOS
ILEGAL JOVEN
LOST EXPLORER ESPADIN

25ML SHOT

MARGARITA

£5	£12
£6	£13
£6.5	£14
£7	£15
£7.5	£16
£8	£17

CANS

L&G, HELLES 440ml, 4% £6.5

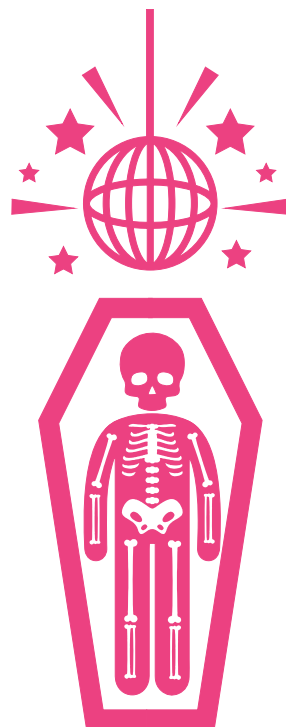
L&G, KELLER PILLS 440ml, 4.6% £6.5

JUBEL, PEACH 330ml, 4% £6

LUCKY SAINT 330ml, 0.5% £6

CAPLE RD. CIDER 330ml, 4.2% £6

HOOCH LEMON 440ml, 4% £6.5



WINE

WHITE

Chardonnay *Belafontaine*
Pinot Grigio *Bottega Vinai Trentino*

125ml

BTL

£6 £30
£8 £40

RED

Merlot *Bellfontaine*
Pinot Noir *Les Mougottes*

£6 £30
£8 £40

ROSÉ

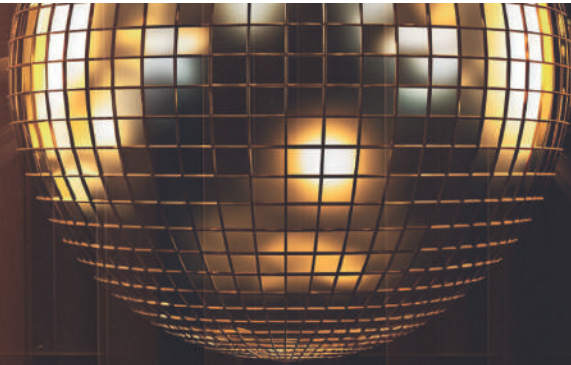
Chiaretto *Ancora Rosé*
Grenache *Anciens Temps*

£6 £30
£8 £40

SPARKLING

Prosecco *Le Dolci Colline*
Telmont Reserve Brut Champagne
Telmont Reserve Rosé Champagne

£8 £40
- £80
- £90



**FOLLOW THE CALL
OF THE DISCO BALL**

DRINK RESPONSIBLY



We operate a challenge 25 policy. Please be prepared to show proof of age when buying alcohol.

An optional 12.5% service charge applies to all table service.